



WOLLONGONG PUBLIC SCHOOL NEWSLETTER

67a Church Street,
WOLLONGONG NSW 2500

Email: Wollongong-p.school@det.nsw.edu.au

Principal: Harold Cosier

Phone: 4228 9120

Term 4, Week 6



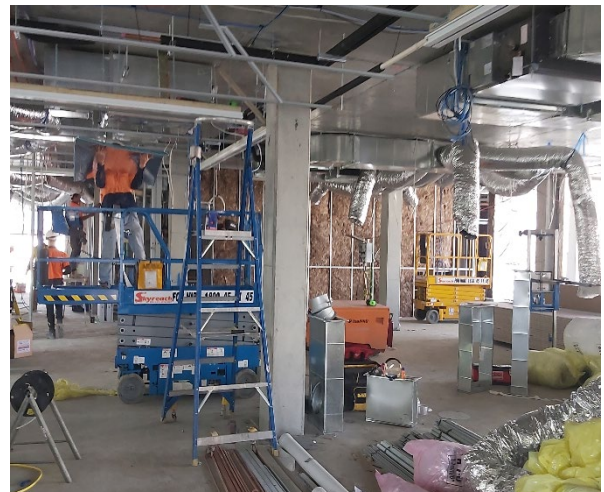
Weekly message

Dear Parents,

Well we have completed another busy week at Wollongong Public School. Significant events for this week and next are:

Building Update

Our Learning Building is rapidly taking shape and there has been a lot of activity this week. I toured the site yesterday with the Site Manager and there are multiple tradesmen on site, installing air-conditioning, electricity and data cabling, insulation, brickwork and completing the roof framework. Next week we can expect to see internal walls and roofing commence, as the building really takes shape.



Community Hub Barista Course Graduation

Yesterday the participants of our Community Hub Barista course received their graduation certificates in a ceremony at our Community Hub. Of course there was great coffee available, and a selection of delicious treats for those of us who attended the ceremony. Our congratulations go to all those who completed the course and our thanks goes to Mrs Yacoub and Kiama Community College for the course organisation. It was also a pleasure to see Ms Ann Burbrook, former Hub Co-ordinator in attendance, as she was instrumental in developing this and many other courses in our Hub.



Country Chess Championship Final

Today our chess team will be competing in the Grand Final of the NSW Country Schools Interschool Championships against a team from Dubbo. This is following on from their win recently to become the Illawarra champions. We wish Nazif, Han, Declan and Quan all the best in their competition.

P&C Meeting

Next Tuesday 26th November we will be holding our final P&C meeting for 2019 at 6.30 pm in the Staff room and all are welcome.

2020 Student Leadership Elections.

We are already planning for 2020 and part of that process is the election of our student leadership team for next year. Next week, all the Year 5 students who have nominated for a position will need to submit a speech in support of their nomination before they present them to the student community, who will then vote in an election. I am very much looking forward to hearing these presentations. Students who gain leadership positions will be announced at our Excellence Assembly on Friday 13 December.

Academically Gifted Class Presentation

Throughout the year, a number of our students from Stage 3 have been attending the Academically Gifted class at Bellambi PS on a Tuesday. Next Tuesday they will be displaying some of their work and giving a presentation as a celebration for their final session. I am looking forward to that event when I attend next Tuesday afternoon, and congratulate the students involved.

Have a great weekend,
Kind regards,

Harold Cosier

Deputy Principal News

Road safety banners

You will have noticed the School Road Safety Fence Banners that are now displayed on our fence at the front of our school to support drop off and pick up processes. This has been provided to us by the council for use until Friday 13th December. We hope that this will draw attention in the community to minimise parking in this location at drop off and pick up times. It is also a reminder for all parents around the regulations with parking and collecting children. We appreciate your continued support with this.

Reports

Teachers are currently in one of their busiest times of year assessing children and writing reports. This semester's report has changed due to the reflection process we completed at the end of term 2. Both staff and parents completed surveys providing us with feedback to enhance our reporting processes. Over the next few weeks, I will be explaining these adjustments to you so you are aware of what to expect in your child's report. The first element is to provide you with clarity around the English as an Additional Language / Dialect (EAL/D) mark and comment. When you first enrolled your child/ren at Wollongong Public School, you will have indicated whether your child/ren speak a language other than English at home. NSW public school students from language backgrounds other than English are required to have their English language proficiency assessed using the ACARA EAL/D Learning Progression. Schools are now required to report to parents the overall EAL/D learning phase (as per the table below) of all EAL/D students at their school. Both classroom teachers and EAL/D teachers have input over this grade and comment as we aim to provide you with more information about how your child is acquiring English as an additional language. Please note, it takes students an average of 5-7 years to progress through the phases and reach academic language proficiency.

Phase	Description
Beginning	Students with some <i>print literacy</i> in their first language. This may include Kindergarten students who were born in Australia.
Beginning, <i>limited literacy background (BLL)</i>	A subcategory to describe reading/writing behaviours typical of students with little or no experience of literacy in any language.
Emerging	Students who have a growing degree of print literacy and oral language competency with English.
Developing	Students who are further developing their knowledge of print literacy and oral language competency with English.
Consolidating	Students who have a sound knowledge of spoken and written English, including a growing competency with academic language.

Below is an example of how the comment and mark will be reflected if your child is identified as learning English as an Additional Language/ Dialect.

English as an Additional Language or Dialect

Overall Achievement

Beg	Em	Dev	Con
-----	----	-----	-----

Effort

Exc	Sat	Imp
-----	-----	-----

Teacher Comment

█ speaks fluently and accurately for a range of school purposes. She is able to follow the main ideas in extended talk and discussions on familiar and unfamiliar topics. █ independently reads and understands a variety of texts. She is able to write a range of types of texts for different purposes. █ uses punctuation, spelling and grammar appropriate for a student in Year 1.

Parent Feedback

Please feel free to contact me if you have any celebrations, concerns or would like to discuss aspects of our school. To arrange an appointment you can email me at matt.richards5@det.nsw.edu.au or contact the school office on 42289120.

I hope you all have a wonderful weekend. Wishing you many happy moments in the week ahead.

Kind regards,

Matt Richards

Instructional Leader Update by Mrs Neaves and Mrs Critoph

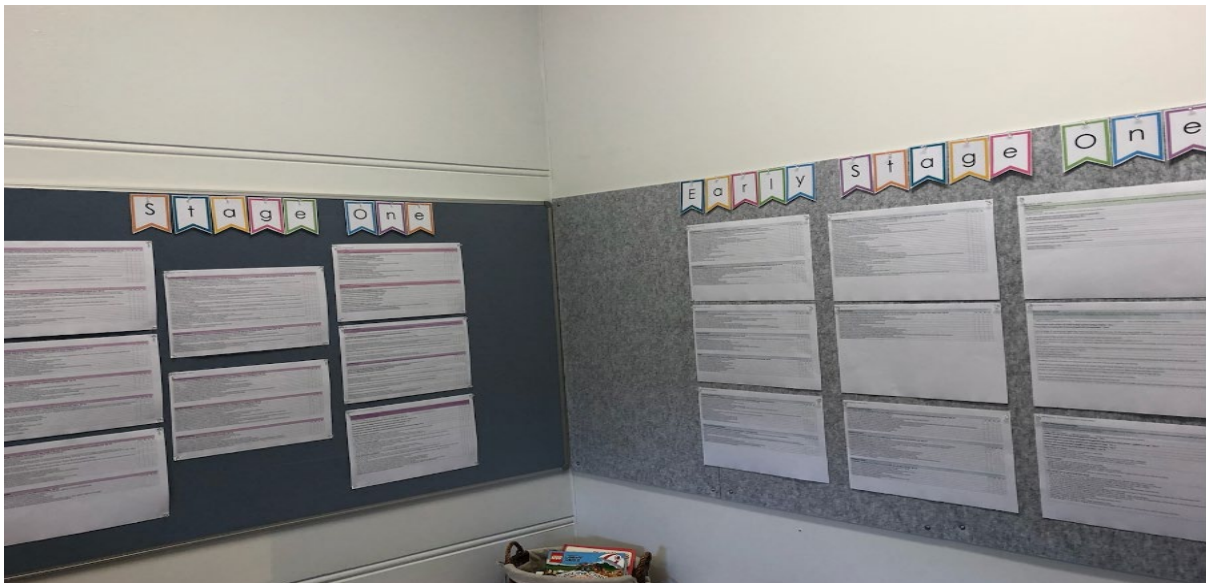
Final Data Cycle for 2020

Teachers and students are now in their final cycle of teaching and learning for 2019. In this cycle of planning the teachers are continuing to target their teaching to individual student need with an identified teaching focus on literacy and numeracy. As stage teams, we are endeavouring to build solid literacy and numeracy skills within all students to successfully transition to a new class in 2020. Mrs Critoph and Mrs Neaves look forward to collecting further data on all children towards the end of Term 4 to ensure we can begin planning for students return to school after the holiday break.

English Units

Last week the teachers in Early Stage 1 and Stage 1 engaged in data talks with Mrs Critoph and Mrs Neaves. During this time it is important for the Instructional Leaders to gain explicit feedback from the teachers to assist with future planning in literacy and numeracy. At our data day we presented some future directions around Textual Concepts and Processes (English Units) and how we can embed other Key Learning Areas into literacy blocks. As a result, Mrs Critoph and Mrs Neaves have been very busy pulling all of the outcomes from Syllabus documents and looking at suitable resources that will support the writing of English units.

Mrs Critoph and Mrs Neaves Syllabus Outcome Walls



~ November 2019 ~						
Sun	Mon	Tue	Wed	Thu	Fri	Sat
24	25 UOW Debating Day	26 Year 5 OC Orientation Day P&C Meeting 6.30pm	27	28	29	30
~ December 2019 ~						
Sun	Mon	Tue	Wed	Thu	Fri	Sat
1	2	3 Surf Awareness Beach Day Yr 5	4 Surf Awareness Beach Day Yr 6	5 Scripture Assembly SHHS Drama Performance K-6	6 Beauty & The Beast K-4	7
8	9	10	11 Yr 6 Farewell	12	13 School Excellence Assembly 11.30am	14
15	16 Specialist Programs Assembly 11.30am	17 Yr 6 Peacekeeper Jamberoo Excursion	18 Yr6 Graduation Ceremony LAST DAY OF TERM 4	19 School Holidays	20 School Holidays	21 School Holidays
22 School Holidays	23 School Holidays	24 School Holidays	25 School Holidays Christmas Day	26 School Holidays Boxing Day	27 School Holidays	28 School Holidays
29 School Holidays	30 School Holidays	31 School Holidays New Years Eve				

What's Due:

SHHS Drama Performance K-6 Students – Payment and Permission note due by [Friday 29th November](#)

Year 6 Peacekeeper Jamberoo Excursion – Payment and Permission note due by [Friday 29th November](#)

2020 Annual Swimming Carnival Competitors Only Yr3, 4, 5, 6 and Yr 2 students turning 8 in 2020 who can competently swim 50M – [Payment and Permission note due by Friday 6th December](#)

Positive Behaviour for Learning at WPS!

What is PBL?

PBL stands for Positive Behaviour for Learning. It is a whole school approach for promoting positive behaviour within our school. PBL is about teaching the desired behaviours to students and showing them how they can be successful, allowing for a safe and supportive learning environment.



What are our school values?

Our school values are the expectations the school and community of WPS believe are required to create a positive learning environment. The 3 school values are: **Respect**, **Responsibility** and **Safety**. All areas around the school have the school values and expectations displayed on signs to support students in making positive choices on the playground and in classrooms.

PBL Lessons

Each week, teachers engage students in PBL lessons which reinforce the three school values and expectations. Our teaching focus for this week was **responsibility of belongings**. We appreciate your support with discussing these expectations with your child at home.



Wollongong Public School
Belongings
RESPONSIBILITY
Label all of your personal belongings with your full name and class
Always zip up your bag after packing away your items
Place belongings in class tubs during recess and lunch

FAST AND FREQUENT PUGGLE



Last term, WPS launched the 'fast and frequent' whole school reward system. This system aims to recognise and encourage positive and appropriate behaviours in all areas at school. A fast and frequent puggle is a small token which all K-6 students can receive when they display the three school values on the playground and in the classroom. All K-6 students were set a target of 5000 puggles to achieve a whole school reward, which is decided by the SRC (Student Representative Council).

The new current total of puggles that K-6 students have collectively received are:
Congratulations WPS on this outstanding effort!



STEM DAY

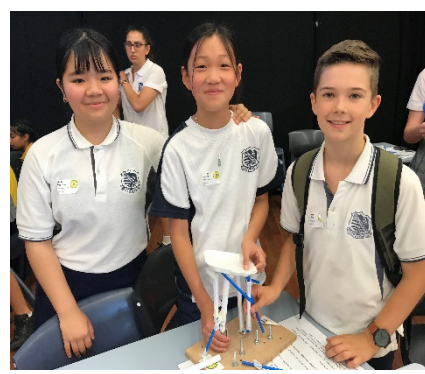
By Imogen and Astrid 5/6C

The day started nice and early, I'd say the only problem was the late bus, once it arrived though we were all really excited for the day. Once we were dropped off at Keira High, we all sat down and got sorted into groups. There was silver, grey, pink, red, yellow and black. After everyone arrived we sat down in the hall and a few people made some speeches. When they were finished we headed to our first activities.

I (Astrid) was doing bridge build, it was quite hard because we had to do it all day and had limited resources, 3 long stripes of tape, cardboard, a few pieces of wood and some paddle pop sticks. Myself (Imogen) headed to the code cracker, where there were a group of senders and receivers. We had to make up codes for each shape, letter and number. After our first activity we headed out for lunch where we had a quick snack, then we went back inside to complete our next activity.

After working so hard all day, my group had to go and build two towers with only three sheets of paper, 6 straws, 1 tray and 2 lines of tape. Our first tower had to hold as many weights as possible, after a lot of deliberation we finally had our final design. Our tower did not hold for very long, but we tried our best. The second tower had to hold weights AND a shake test, this time it was much easier, our tower held for longer but did eventually fall.

At the end of the day each school was able to test out their bridge in front of everyone. Our bridge carried the most weight but unfortunately we were penalised for how much our bridge weighed. We all went on the bus back to school and had a little rest after a busy day.



2020 WPS Leadership Speeches

Parents and our school community are invited to attend and listen to the speeches, to support student applications, to become a Captain or Prefect in 2020. The speeches will be held in the school hall on Monday 2 December at 9:15am.

Save the date



Recognition of
Excellence Assembly
Friday 13th December 2019
11.30am

Recognition of
Specialist Programs Assembly
Monday 16th December 2019
11.30am

Year Six
Graduation Ceremony
Wednesday 18th December 2019
2.00pm



Shaiyan's Book Stall for the RSPCA



One of our students, Shaiyan Morshed, has been very busy over the past few weeks with a student-run book stall to raise money for charity. Shaiyan researched and created a passion project on the RSPCA and was inspired to help! In the mornings and during lunch, Shaiyan and his friends in 3/4E sold donated books to students at our school to raise money for the RSPCA.

The total amount raised was an amazing \$250!

Well done, Shaiyan and all of the students that donated books and helped with the stall!



"I donated to the RSPCA because I researched it for my passion project and I found out that all the animals there were probably abandoned and have no food. The RSPCA helps these animals and tries to find them a new home. Since they have lots of animals, they always need money to feed them, so I've been selling books in the morning and at lunch to help. A big thank you to all the families who donated and bought books. Without you, this project would have never reached its goal. And I also want to thank the office ladies for announcing my book stall every day and being awesome. With the help of my friends, we raised \$250 for the local RSPCA!"

- Shaiyan, 3/4E

UNIFORM SHOP


School Uniform ordering is moving from online purchasing to being available in the uniform shop.

Opening hours are Thursday's from 3pm – 3.30pm and Fridays from 8am – 8.30am

The uniform shop is located on the top floor of A Block Eastern end.

School Hats can also be purchased from the Administration Office. Cost is \$13.

Please ensure you have the correct money as no change is available from the office.

 WOLLONGONG PUBLIC SCHOOL UNIFORM PRICE LIST 2019		
Item	Price per item	Sizes
Shorts	\$15.00	4 6 8 10 12 14 16
Skort	\$18.50	4 6 8 10 12 14 16
Trackpants	\$25.00	4 6 8 10 12 14 16
Polo Shirt Short Sleeve	\$23.00	4 6 8 10 12 14 16
Jacket	\$40.00	4 6 8 10 12 14 16
Jumper	\$21.00	4 6 8 10 12 14 16
Sports Shirt	\$25.00	6 8 10 12 14 16
Summer Dress STOCK ARRIVING SOON		
Bucket Hat	\$13.00	S/M M/L L/XL
*PRICES SUBJECT TO CHANGE		

SCHOOL HOLIDAY PROGRAM

19 DEC 2019-28 JAN 2020
Open from 7am to 6pm



THURS 19 Dec

MARKET DAY

Operate your own market stall including face painting, hair salon, guessing competitions and lots more! Everyone will get special Fun club dollars to spend and earn.

COST: DAILY FEE

FRI 20 Dec

SYMBIO WILDLIFE PARK

A fun day seeing some interesting animals up close. We will also cool off in the Splash Park.

COST: DAILY FEE + \$50
TIME: 9AM TO 4PM
EXTRA: SWIMMERS, TOWEL/ CHANGE OF CLOTHES

MON 23 Dec

ART ATTACK: CHRISTMAS EDITION!

Christmas is almost here, so come help us decorate Fun Club and make some Christmas gifts and decorations.

COST: DAILY FEE

TUES 24 Dec

SANTA CLAUS IS COMING TO FUN CLUB!

It's Christmas EVE! So wear Christmas colours and come celebrate with us. Help decorate, sing & dance to carols and make some yummy Christmas treats.

COST: DAILY FEE

CENTRE CLOSED:
THURS
2 Jan

CENTRE CLOSED:
FRI
3 Jan

MON 6 Jan

MOVIES & PIZZA

Who doesn't love pizza and a movie? Today we are chilling out and catching up on our favourite movies (G or PG). There's also plenty of other activities available if you are too active to sit and watch.

COST: DAILY FEE + \$5
EXTRA: LUNCH PROVIDED

TUES 7 Jan

HOLEY MOLEY / B LUCKY & SONS

Putt Putt golf and arcade games, what more could you want?

COST: DAILY FEE + \$30
TIME: 10 AM TO 2PM

WED 8 Jan

GREEN THUMBS

Do you love gardening? Come join us today as we start our very own vegetable patch and make a scarecrow. You will even get to take home your very own pot plant.

COST: DAILY FEE
EXTRA: LUNCH PROVIDED

THURS 9 Jan

THE QUEEN'S CORGI & MCCABE PARK

We are heading to Greater Union Wollongong to see The Queen's Corgi and then across to McCabe park for a picnic lunch and play at the park.

COST: DAILY FEE + \$20
TIME: 10AM TO 2PM

FRI 10 Jan

SUPER SOAK 'EM DAY

We will have a Water Jumping Castle, so bring your water guns, super soakers, a towel and some extra clothes because you will get drenched!

COST: DAILY FEE + \$10
EXTRA: SWIMMERS, TOWEL/ CHANGE OF CLOTHES



Big Fat Smile **FUN CLUB**

@Wollongong East | P: 4227 1961
Visit bigfatmile.com.au/funclub to enrol

MON 13 Jan

RAINBOW COLOUR RUN

Ready Set Rainbow! Join us for an energetic day of fun and colour. There will be lots of rainbow fun. Don't forget your white shirt.

COST: DAILY FEE
EXTRA: SWIMMERS, TOWEL/ CHANGE OF CLOTHES

TUES 14 Jan

FUN CLUB WATER PARK

Come and cool down at Fun Club with some fun water related games and activities.

COST: DAILY FEE
EXTRA: SWIMMERS, TOWEL/ CHANGE OF CLOTHES

WED 15 Jan

MEXICAN FIESTA

Come dressed in green, red and white for our Mexican Fiesta. Put on a sombrero and feast on tacos. There'll even be a piñata to smash and a game of Pin the Tail on the Burro. Arriba!

COST: DAILY FEE
EXTRA: LUNCH PROVIDED

THURS 16 Jan

SCIENCE SPACE AND STUART PARK

A day of interactive science experiments and planetarium shows. Stopping by at Stuart Park for a play and afternoon tea too!

COST: DAILY FEE + \$40
TIME: 9:30AM TO 3:30PM

FRI 17 Jan

SPIES IN DISGUISE @ THE MOVIES

We are heading to Greater Union Wollongong to see Spies in Disguise and then across to McCabe park for a picnic lunch.

COST: DAILY FEE + \$20
TIME: 10AM 2PM



MON 20 Jan

INFLATABLE POOL PARTY

Bring your swimmers and a towel too! Join us at the Illawarra Swim School for a pool party! Additional swimming note required.

COST: DAILY FEE + \$30
TIME: 10AM TO 1PM
EXTRA: SWIMMERS, TOWEL, GOGGLES

TUES 21 Jan

MINUTE TO WIN IT

Race against the clock in a number of wacky minute long challenges!

COST: DAILY FEE

WED 22 Jan

LUAU PARTY!

LUAU PARTY! Put on your wildest shirts & Hula Skirts and join us for a Hawaiian party day. We will also learn how to Hula and take on the limbo pole.

COST: DAILY FEE
EXTRA: LUNCH PROVIDED

THURS 23 Jan

CHINESE NEW YEAR

Join us as we celebrate the Chinese and Lunar new year with traditional art, customs and food as we welcome the year of the rat!

COST: DAILY FEE

FRI 24 Jan

WHEELS DAY

Are you ready to have a wheelie good day? Bring your bikes or scooters and compete against your mates in a time trial. Don't forget your protective gear!

COST: DAILY FEE
EXTRA: BIKE OR SCOOTER AND HELMET

CENTRE CLOSED:
MON
27 Jan

TUES 28 Jan

AUSTRALIA DAY BBQ

Join us for a run through the sprinkler, face painting and fun games like the thong toss. We will also make some lamingtons and have a Sausage Sanga for lunch.

COST: DAILY FEE
EXTRA: LUNCH PROVIDED

Bookings close
13 December
ENROL NOW!



Big Fat Smile **FUN CLUB**

@Wollongong East | P: 4227 1961

DAILY FEE \$66: Less CCS entitlement. For your individual fee estimate please call Sharon on 4283 9964. Families need to complete a Child Care Subsidy assessment (online at myGov/Centrelink), including confirming the name of your child care provider - otherwise full fees will be charged.





WOLLONGONG PUBLIC SCHOOL
Church Street, Wollongong 2500
Wollongong-p.school@det.nsw.edu.au
Phone: 4228 9120

Wollongong Public School Xmas Raffle



Dear parents / carers,

It is that time of year again when we start planning for Xmas and the holidays. At Wollongong Public School we are running a Xmas raffle to raise funds for more seating in the shade and more native plants for our gardens.

We are asking 2 things: firstly are you able to donate something for our Xmas hampers? We hope to put together 10 hampers as prizes. Secondly, your child will bring home a book of 10 raffle tickets which we would like you to either buy or sell. The tickets are only \$1 each and all the money goes towards making our school environment a more attractive place.



Thank you in advance for your continued support of our school. All donations of Xmas food, Xmas plates, decorations and small Xmas gifts will be much appreciated. There will be a box in the office for you to place them in. The tickets will go home in Week 4 and the raffle will be drawn on Friday 6th December.

Harold Cosier
School Principal



Melinda Boreland
Organising Teacher





City of Wollongong Giving Tree Appeal

2019

Make a difference to a young child's Christmas!

City of Wollongong Giving Tree and Bikers Toy Run support two Wollongong charities, St Vincent de Paul Society and Anglicare. The Giving Tree Appeal plays an essential part in helping make Christmas a special day for all children.

**Unwrapped gifts or gift cards for children
0-16 years can be received until 17 December at:**

- ★ Wollongong Central Customer Service Centre Desk (*Level 1 Crown*)
- ★ Council's Customer Service Area and Council Libraries
- ★ The Central, UOW Innovation Campus
- ★ Figtree Grove and Warrawong Plaza Customer Service Centre Desks
- ★ iHub Visitors Information Centre
- ★ Port Kembla Golf Club
- ★ WAVE FM, Warrawong
- ★ Novotel Northbeach
- ★ Wests Illawarra

Event Contact: Wollongong City Council on 4227 7111 or wollongong.nsw.gov.au/christmas



★★ 30 YEAR CELEBRATION ★★

City of Wollongong Bikers Toy Run

Memorial Run
for
IVAN
ZGELA



**Saturday,
7 December 2019**
**Crown Street Mall,
Wollongong**
10.30am - 2pm

- ★ **Bike Expo Displays include:**
Just Cruisin' Motorcycle Tours
Australian Motorlife Museum
City Coast Motorcycles
NSW Police
and more...
- ★ **Free face painting**
- ★ **Best dressed bike**
- ★ **Best dressed rider**
- ★ **Free Jumping Castle**
- ★ **Motorbikes arrive at 11am**
- ★ **Live entertainment by The Record Breakers**
- ★ **30 Year Memorial Patch available on the day to purchase**
- ★ **Bring an unwrapped gift or gift card for children up to 16 years of age**

City of Wollongong Giving Tree and Bikers Toy Run support two Wollongong charities, St Vincent de Paul Society and Anglicare. The Giving Tree Appeal plays an essential part in helping make Christmas a special day for all children.

Bikers Information Only

Departs: 10.30am sharp from The Shellharbour Club

Bike Contact: Jeff on 0404 490 191 or Mick on 0491 154 165 **Event Contact:** Wollongong City Council on 4227 7111





Made Fresh Canteen Menu



BREAKFAST ONLY (Sold at counter only)

Oven Baked Hash Brown	\$1.00
-----------------------	--------

BREAKFAST, RECESS & LUNCH (Sold at counter only)

Plain Milk Cup	\$1.00
Hot Chocolate Cup	\$1.50
Light Chocolate Milk Cup	\$1.50
Light Strawberry Milk Cup	\$1.50
Light Banana Milk Cup	\$1.50
Toasted Cheese Sub	\$1.50
Toasted Cheese & Lean Ham Sub	\$2.00
Corn Flakes Bowl	\$2.50
Pancakes x2 with Honey	\$2.50

SANDWICHES (White or Wholemeal Bread)

Vegetemite	\$1.50
Jam	\$1.50
Honey	\$1.50
Cheese	\$2.00
Lean Ham	\$2.50
Cheese & Tomato	\$3.00
Lean Ham & Cheese	\$3.50
Lean Ham, Cheese & Tomato	\$4.00
Salad (Lettuce, Tomato, Carrot, Cucumber)	\$4.00
Tuna, Lettuce & Mayo	\$4.00
Fresh Chicken with Cheese	\$4.00
Fresh Chicken, Lettuce & Mayo	\$4.00
Fresh Chicken & Salad	\$4.50
Lean Ham & Salad	\$4.50

WRAPS & ROLLS (Tortilla or Lebanese Bread)

Cheese & Tomato	\$3.50
Lean Ham & Cheese	\$4.00
Lean Ham, Cheese & Tomato	\$4.50
Salad (Lettuce, Tomato, Carrot, Cucumber)	\$4.50
Tuna, Lettuce & Mayo	\$4.50
Fresh Chicken with Cheese	\$4.50
Fresh Chicken Lettuce & Mayo	\$4.50

VEGGIE & OTHER SNACK PACKS

Fresh Cut Veggie Cup	\$1.50
Veggie Snack Pack Dome with Carrot, Celery, Corn, Tomatoes & Bread Sticks	\$4.00
Veggie Snack Pack Dome with Cheese Cubes & Bread Sticks	\$4.50
Veggie Snack Pack Dome with Fresh Chicken Breast & Bread Sticks	\$5.00

SALADS (All Salads served in 12oz Dome)

Garden Salad	\$4.00
Tuna Salad	\$4.50
Cheese Salad	\$4.50
Lean Ham Salad	\$4.50
Fresh Chicken Breast Salad	\$4.50
Fresh Chicken Breast Pasta Salad	\$5.00
Fresh Chicken Caesar Salad with Lean Ham	\$5.00

FRESH FRUIT & YOGHURT

Diced Pineapple Small Cup	\$1.00
Oranges, Apples, Mandarins	\$1.00
Banana	\$1.50
Fresh Watermelon Cup	\$2.00
Fresh Diced Fruit Cup	\$2.00
Vanilla Yoghurt	\$2.00
Yoghurt with Muesli Cup	\$2.50
Yoghurt with Fruit Cup	\$3.00
Seasonal Fresh Fruit Salad Bowl (12oz)	\$4.00

OCCASIONAL FOOD & SNACKS

HOT FOOD

Potato Wedges Cup	\$3.00
Noodles Cup	\$3.50
Chicken Hot Dog (one free sauce)	\$3.50
Beef Hot Dog (one free sauce)	\$3.50
Chicken Nuggets (5 pieces)	\$3.50
Sausage Roll (one free sauce)	\$4.50
Meat Pie (one free sauce)	\$4.50

SNACKS & OTHER TREATS

Homemade Cookies x1	\$0.50c
Gummy Bear x 3	\$1.00
Homemade Muffins (freshly made daily)	\$1.50
Chicken & Corn Roll	\$1.50
Plain Ice Cream Vanilla	\$2.00
Red Rock Deli Chips 28g (2 Flavours)	\$2.50

HOT FOOD

Garlic & Herb Toasty (freshly made daily)	\$1.50
Pizza Cheese Sub (served on roll)	\$2.50
Mexican Quesadilla	\$3.00
Stuffed Vine Leaves with Rice x5	\$3.00
Meatball Sub with Napoletana Sauce	\$4.50
Grilled Chicken Souvlaki on a Roll	\$4.50
Homemade Pizza with Cheese	\$5.00
Homemade Pizza with Lean Ham & Cheese	\$5.50
Homemade Hawaiian Pizza	\$5.50
Lasagne	\$5.50
Cheese burger (lean beef)	\$5.50
Aussie Lean Beef Burger Lettuce/Tomato	\$5.50
Fresh Grilled Chicken Fillet Burger	\$5.50

SUSHI (available every Tuesday-pre order by Friday)

Teriyaki Chicken with Cucumber	\$4.50
Teriyaki Beef with Cucumber	\$4.50
Veggie Tofu, Carrot, Cucumber VEGAN	\$4.50
Tuna with Cucumber	\$4.50

DAILY HOMEMADE MENU

Monday	Pasta Carbonara with Lean Ham	\$4.50
Tuesday	Mac & Cheese Pasta	\$4.50
Wednesday	Hokkien Noodles Chicken	\$4.50
Thursday	Pasta with Meatballs	\$4.50
Friday	Pasta Bolognaise	\$4.50

DAZZLING MEAL DEALS... If you buy a meal combo you would save up to \$1.00

PACK 1: CHEESE SANDWICH	\$3.50
Water 400ml + Popcorn or Frozen Juice Stick	
PACK 2: STUFFED VINE LEAVES with RICE x5	\$4.50
Water 400ml + Popcorn or Frozen Juice Stick	
PACK 3: MEATBALLS SUB	\$6.00
Water 400ml + Popcorn or Frozen Juice Stick	
PACK 4: PASTA with MEATBALLS	\$6.00
Water 400ml + Popcorn or Frozen Juice Stick	
PACK 5: PASTA BOLOGNAISE	\$6.00
Water 400ml + Popcorn or Frozen Juice Stick	
PACK 6: FRESH CHICKEN & CHEESE ROLL	\$6.50
Water 400ml + Popcorn or Frozen Juice Stick	
PACK 7: FRESH CHICKEN SALAD SANDWICH	\$6.50
Water 400ml + Popcorn or Frozen Juice Stick	

CRUNCH N SIP PACKS

Piece of Fruit & Water 400ml	\$2.50
Diced Fruit Cup & Water 400ml	\$3.00

SNACKS & FROZEN TREATS

Frozen 99% Juice Cup Small (3 Flavours)	0.50c
Plain or Frozen 99% Juice-Jelly Cup Small (3 Flavours)	0.50c
Frozen Diced Pineapple Small Cup	\$1.00
Frozen 99% Juice Cup (3 Flavours)	\$1.00
Frozen 99% Quelch Fruit Juice Sticks (4 Flavours)	\$1.00
Popcorn	\$1.00
Bread Sticks x 4	\$1.00
Custard Cup	\$1.00
Frozen Plain Milk Cup	\$1.00
Plain or Frozen 99% Juice-Jelly Cup (3 Flavours)	\$1.00
Frozen Chocolate Milk Cup	\$1.00
Frozen Strawberry Milk Cup	\$1.00
Frozen Banana Milk Cup	\$1.00
Frozen Watermelon Cup	\$2.00
Frozen Grapes Cup (seasonal)	\$2.00
Frozen 99% Nippy's Juice Cup (3 Flavours)	\$2.00
Messy Monkeys Snack (Chicken, Cheese, Pizza)	\$2.50

WATER - MILK & JUICES

Water 400ml	\$1.50
Water 600ml	\$2.00
Popper 100% juice (3 Flavours)	\$2.50
Milk 300ml (plain)	\$2.50
Light Milk 300ml (3 Flavours)	\$3.00

As required by the NSW government all menu items sold each day, are to be listed as Everyday or Occasional food to allow parents and caregivers informed choices.

The NSW state government states menu items are required to be 75% everyday and 25% occasional.

Made Fresh is proud that we have exceeded this requirement.

We have kept our prices reasonable even after an increase to the levy for the "container scheme fee". Our suppliers have also increased their prices on eligible/quality goods under the new "star system".

Your child's healthy eating is paramount to our business.

Thank you for your ongoing support.

